

MACSUR Regional Pilot Case Study Mostviertel – AT



Deconstructing the Regional Pilot Case Study

Schönhart, M.

¹ Institute for Sustainable Economic Development, BOKU University of Natural Resources and Life Sciences, Vienna

✉ martin.schoenhardt@boku.ac.at, 01-47654-3663



Research questions

climate change – environment – welfare

Is there common understanding of CC?
Are the right questions asked?
New questions that emerged from the project?

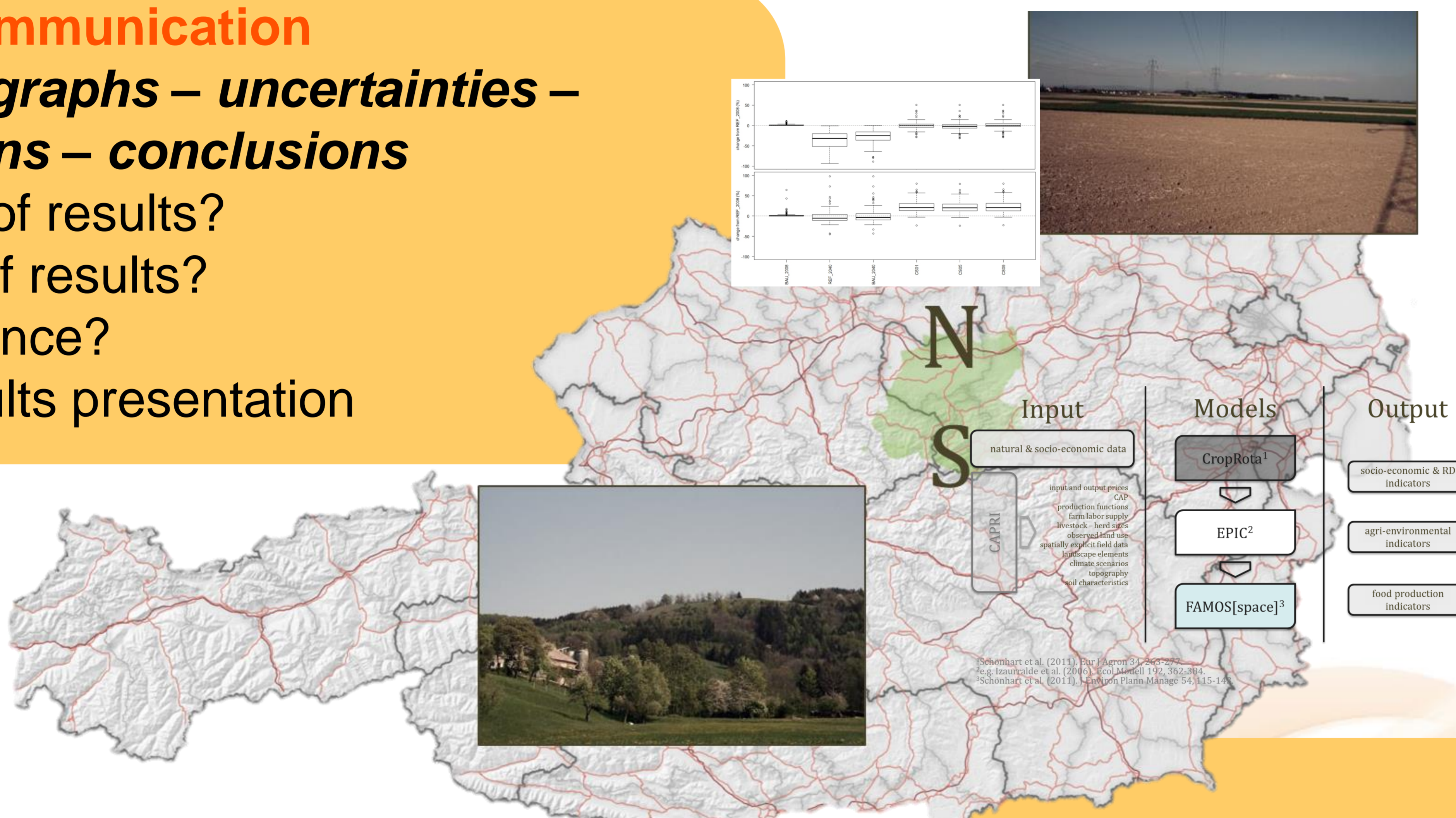
Stakeholder participation

Whom to address, when, about what?

Results communication

maps and graphs – uncertainties – assumptions – conclusions

Relevance of results?
Upscaling of results?
Major audience?
Kind of results presentation



Methods

integrated modelling – optimization

Alternatives: alternative modelling, surveys, scenario techniques (+ indicators), statistical analyses, case studies and results transfer?

Uncertainties

methods and assumptions – climate change – data – interpretation

How to communicate?

case study methodology

question to stakeholders

Modelling European Agriculture with Climate Change for Food Security

